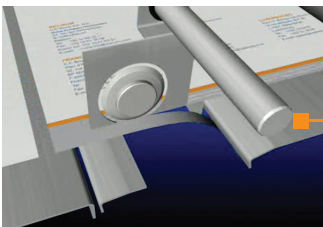


BOURG BLEED CREASE MODULE

BCM-e



- The BCM-e has a unique design which enables it to process individual sheets at very high speeds while maintaining extreme precision. Offering the highest quality knife creasing – superior to wheel creasing – the BCM product line can adapt to the variable speeds of connectable equipment. The BCM-e is designed to be connectable with C.P. Bourg’s e-series Near-Line and Off-Line products.



FEATURES	ADVANTAGES	BENEFITS
Large Paper Range	Maximum media size 578 x 364 mm (22.76 x 14.33 in) Minimum media size 203 x 178 mm (7.99 x 7.01 in)	Offers a wide range of booklet formats
Connectable to	Feeders: BSF Booklet Makers: BM-e, BDFE	Booklet making solution for digital needs
Graphical User Interface (GUI)	User friendly industrial grade color touch screen Single GUI for all the finishing line	Easy to use interface
Bleed Trim Function	Sheets entering the BCM are registered and both lateral strips are cut Bleed trim function may be bypassed	Removes white borders of digitally printed sheets Capable of correcting printing imperfections with asymmetric trimming
Crease Function	Highest quality knife creasing at high speeds Crease function may be applied to cover, all sheets, or bypassed	Optimal productivity creasing Allows the booklet maker to fold without breaking paper grain (especially for heavy covers) Allows for different creasing debt (to adjust creasing for paper weight)
Waste Bin	Up to 4 hours capacity Can be emptied while machine is in operation	Easy and efficient waste disposal



BCM-e
OFF-LINE

TECHNICAL SPECIFICATIONS

POPULAR CONFIGURATIONS



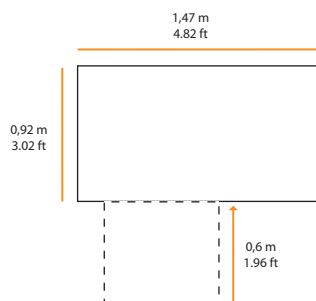
BSF + BCM-e + BM-e

BSF + BCM-e + BDF-e



Category	Bleed-Trimmer/Creaser
Model	BCM-e
Media/Sheet Sizes	
Input Sheet Size (saddle stitching)	(In Track) x (Cross Track)
Min	203 x 178 mm (7.99 x 7.01 in)
Max	578 x 364 mm (22.76 x 14.33 in)
Bleed/Trim	
Min	4 mm (0.16 in)
Max	25.4 mm (1 in)
Media/Sheet Weights	
Min	50 gsm
Max	350 gsm
Maximum Speed	12000 sheets/hour
Power Supply	120 V ±10% – 60 Hz – 8 A
Connectable Input	BSF
Power Supply	In-Line w/ Press 120 V ±10% – 60 Hz – 6 A 230 V ±10% – 50 Hz – 4 A
Power Consumption:	
Operational Mode	1000 W
Radiant Heat (OM)	3420 BTU/h
Standby Mode	115 W
Radiant Heat (SM)	393 BTU/h
Sound Level	70 dB
Dimensions	
Length	1.47 m (4.82 ft)
Width	0.92 m (3.02 ft)
Height	1.10 m (3.61 ft)
Weight	295 kg (650.4 lbs)

DIMENSIONS



MEDIA / SHEET SIZES

